



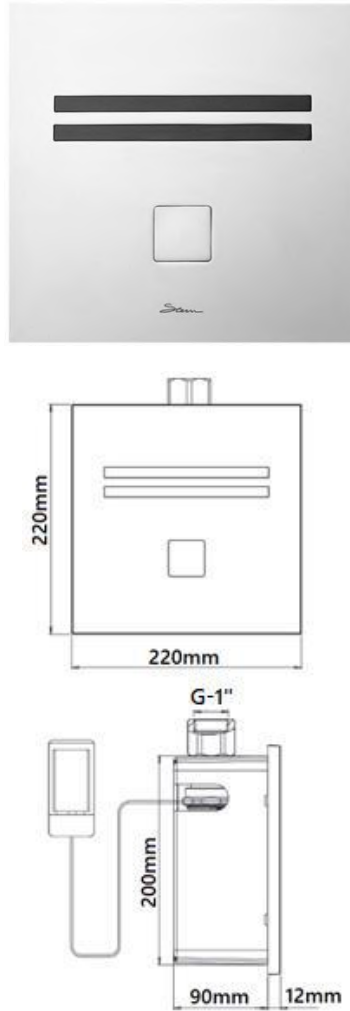




Acme Sanitary Ware Co Ltd

Acme Building, 22-28 Nanking Street, Kowloon, Hong Kong
 Tel: 2388 7171 Fax: 2710 8012
 E-mail: acme@acmesanitary.com.hk
 Website: www.acmesanitaryware.com.hk



PROJECT		REF		REV	ITEM CODE	
LOCATION		DATE			PAGE	

SANITARY WARE SPECIFICATION SHEET

Item Descriptions	Stern (Israel) "Nara 2032" Touch-free electronic infrared sensor toilet dual flush valve with a mechanical override button in DC Supply with 9V battery box	<div>Illustration/ Drawing</div> 																																				
Model	Nara 2032																																					
Coda Number	160310																																					
Finish	Satin Finish																																					
Source	Acme Sanitary Ware Co. Ltd Mr. Eric Wong / Mr. Don Yuen																																					
Contact Tel/Fax	(852) 2388-7171 / (852) 2710-8012																																					
E-mail	acme@acmesanitary.com.hk																																					
Website	www.acmesanitary.com.hk																																					
NARA 2032 Ref # 160310 Touch-free electronic W.C. flush valve with a mechanical override button. Activated by a dual flush infrared sensor. Metallic panel in satin finish. Shut-off valve, filter and a low battery indicator are included. Powered by a 9V battery. With a 24-hour hygiene flush. Adjustable settings by remote control: sensor range, security time, delay in, delay out, on-off and reset to factory settings. Low water consumption options and pre-flush operation are available upon request.																																						
Application: Helps washrooms stay clean and saves water. Ideal for educational institutions, gas stations, restaurants. In addition, its minimalistic style makes it perfect for any locations with high design standards.																																						
Use: Touch-free electronic W.C. flush valve. Water will flush after the user moves away from the toilet. If the user spends less than one minute in front of the sensor, a half flush (3 liters) will take place. For more than one minute, a full flush (6 liters) will take place.																																						
<table><tr><th colspan="2">PRODUCT AT A GLANCE</th></tr><tr><td>Installation</td><td>Concealed. Iron frame available</td></tr><tr><td>Power Supply</td><td>• 9V battery • 9V transformer</td></tr><tr><td>Operating pressure</td><td>1.0-8.0 bar / 14.5-116.0 PSI</td></tr><tr><td>Water flow</td><td>3 LPF half flush / 0.8 GPF 6 LPF full flush / 1.58 GPF</td></tr><tr><td>ECO - Water saving option</td><td>4.5 LPF full flush / 1.18 GPF</td></tr></table>			PRODUCT AT A GLANCE		Installation	Concealed. Iron frame available	Power Supply	• 9V battery • 9V transformer	Operating pressure	1.0-8.0 bar / 14.5-116.0 PSI	Water flow	3 LPF half flush / 0.8 GPF 6 LPF full flush / 1.58 GPF	ECO - Water saving option	4.5 LPF full flush / 1.18 GPF																								
PRODUCT AT A GLANCE																																						
Installation	Concealed. Iron frame available																																					
Power Supply	• 9V battery • 9V transformer																																					
Operating pressure	1.0-8.0 bar / 14.5-116.0 PSI																																					
Water flow	3 LPF half flush / 0.8 GPF 6 LPF full flush / 1.58 GPF																																					
ECO - Water saving option	4.5 LPF full flush / 1.18 GPF																																					
<table><tr><th colspan="4">ORDERING INFORMATION</th><th colspan="2">OPTIONS</th></tr><tr><th>MODEL</th><th>CODE</th><th>POWER</th><th>ADDITIONAL FEATURES</th><th>OPTION</th><th>CODE</th></tr><tr><td>NARA 2032</td><td>160310</td><td>9V battery</td><td>Dual flush operation</td><td>Remote control</td><td>07100006</td></tr><tr><td>NARA 2032 E</td><td>160410</td><td>9V transformer</td><td>With a mechanical override flush button</td><td>Iron frame</td><td>Upon request</td></tr><tr><td>NARA ECO 2032</td><td>160320</td><td>9V battery</td><td>Dual flush operation Water saving LEED setting</td><td>Matching urinal flush valve</td><td>Upon request</td></tr><tr><td>NARA ECO 2032 E</td><td>160330</td><td>9V transformer</td><td>With a mechanical override flush button</td><td>Set of pipes</td><td>07291037</td></tr></table>			ORDERING INFORMATION				OPTIONS		MODEL	CODE	POWER	ADDITIONAL FEATURES	OPTION	CODE	NARA 2032	160310	9V battery	Dual flush operation	Remote control	07100006	NARA 2032 E	160410	9V transformer	With a mechanical override flush button	Iron frame	Upon request	NARA ECO 2032	160320	9V battery	Dual flush operation Water saving LEED setting	Matching urinal flush valve	Upon request	NARA ECO 2032 E	160330	9V transformer	With a mechanical override flush button	Set of pipes	07291037
ORDERING INFORMATION				OPTIONS																																		
MODEL	CODE	POWER	ADDITIONAL FEATURES	OPTION	CODE																																	
NARA 2032	160310	9V battery	Dual flush operation	Remote control	07100006																																	
NARA 2032 E	160410	9V transformer	With a mechanical override flush button	Iron frame	Upon request																																	
NARA ECO 2032	160320	9V battery	Dual flush operation Water saving LEED setting	Matching urinal flush valve	Upon request																																	
NARA ECO 2032 E	160330	9V transformer	With a mechanical override flush button	Set of pipes	07291037																																	
<div><div>Installation: Concealed</div><div>Operating pressure: 1.0 – 8.0 bar</div><div>Power source: 9V Lithium battery</div></div> 																																						

**Installation:**

Concealed

**Operating pressure:**

1.0 – 8.0 bar

**Power source:**

9V Lithium battery



* All information of the above is for the reference only. No prior notice is made if any changes.



Acme Sanitary Ware Co Ltd

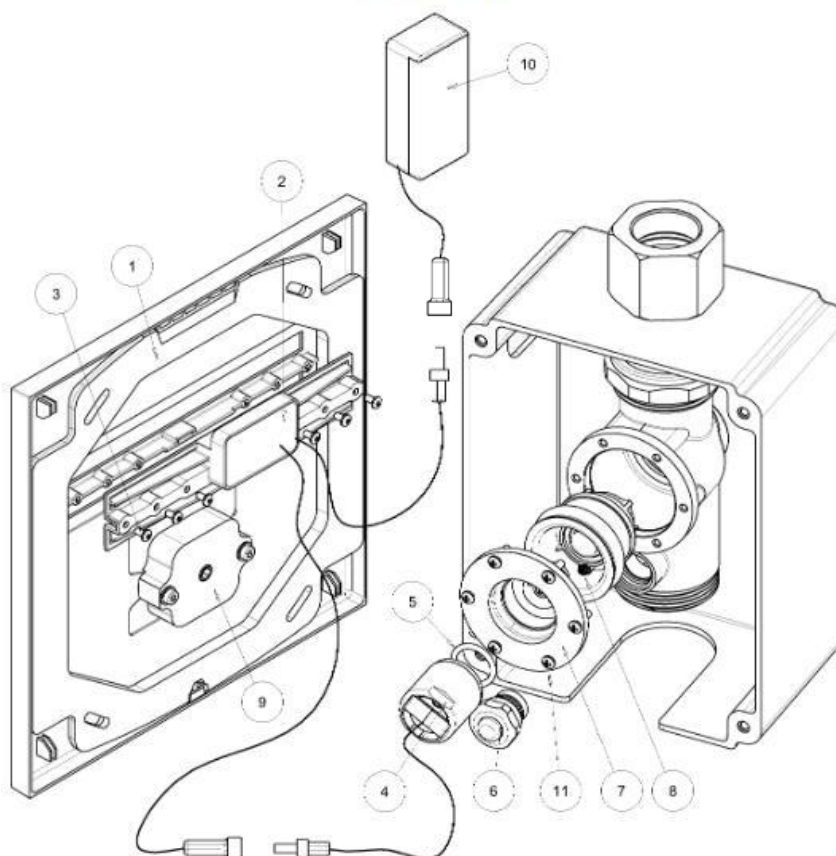
Acme Building, 22-28 Nanking Street, Kowloon, Hong Kong
Tel: 2388 7171 Fax: 2710 8012
E-mail: acme@acmesanitary.com.hk
Website: www.acmesanitaryware.com.hk



PROJECT		REF		REV	ITEM CODE	
LOCATION		DATE			PAGE	

SPARE PARTS LIST

Nara 2032 (160310)



Quantity	Part Number	Description	Cat. No.
	1	Panel Kit (without sensor)	07040192
	-	SA Duet Sensor Kit	07220061
1	2	SA Duet sensor	
6	3	Screw	
	-	Solenoid Valve Kit with Acetal Body	07230015
1	4	Solenoid	
1	5	O-Ring	
	8	Piston Kit	07290038
		Piston+Piston Cover Kit	07290049
1	8	Piston Kit	
1	7	Piston Cover Kit	
6	11	Screw	
	6	Push Button Kit	07245018
	9	Push Button Kit for Panel	07245015
	10	Battery Box	06530008

Note: In order to locate the relevant spare part, please check the corresponding parts and part number in the drawing. Minimum order quantity will be required.

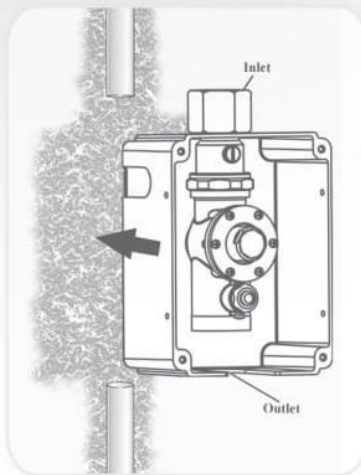
* All information of the above is for the reference only. No prior notice is made if any changes.



INSTALLATION

NARA 2032

Step 1 – Installing the flush valve and connecting the water supply



- 1) Shut off the water supply.
- 2) Cut an adequate opening in the wall for the dimensions of the box and the sleeve (not supplied).
- 3) Insert the electronic flush valve's box through the opening.
- 4) Connect the flush valve inlet to the water supply.
- 5) Connect the flush valve outlet nipple to the pipe leading to the W.C.'s inlet.
- 6) Turn on the water supply. Make sure there is no water leakage.

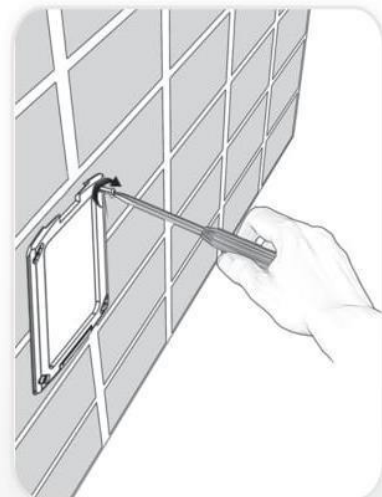
7) Assemble the temporary protective cover to protect the flush valve.

Step 2 – Connecting the power source

1) Once the electricity, plumbing and tiles works are finished, replace the temporary protective cover with the plastic seat. Adjust it using the four screws provided.

- 2) a. Connect the electronic unit connector that leads to the solenoid valve to the solenoid connector.
b. Connect the electronic unit connector that leads to the power source to the battery box connector.

3) Before assembling the panel, consider using the provided adjusting screw in order to optimize the operation of the mechanical button. If needed, assemble the adjusting screw to the mechanical button at the internal side of the panel and adjust it to the desired distance.





INSTALLATION

NARA 2032

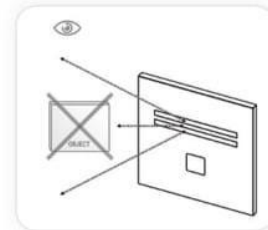
Pay attention, steps 4-7 must be completed within 30 seconds:

30
sec

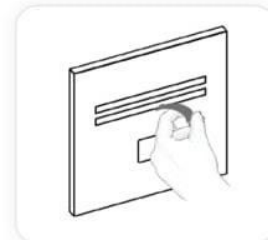
4) Insert the battery into the battery box.

5) Assemble the panel to the cover seat. Do not tighten the bottom screw yet.

6) The ideal sensor range for the specific location will be set automatically. Right now, check that no objects are in front of the sensor.



7) Remove the protective sticker covering the sensor and move away from the sensor range.



8) Wait about 30 seconds before you step or put your hand within the sensor range. As an indication that the self adjusting is taking place, a red light in the sensor eye will flash continuously. The solenoid valve will be opened and closed for 1 second as an indication that the ideal sensor range was set and the product is ready for use.

9) To operate, step within the sensor range for a minimum of 8 seconds. Move away and the flush valve will flush a few seconds after your departure.

10) If needed adjust the flow rate by turning the regulating valve. In order to avoid entering into the self adjusting mode, do not disconnect the cables between the electronic unit and battery box.

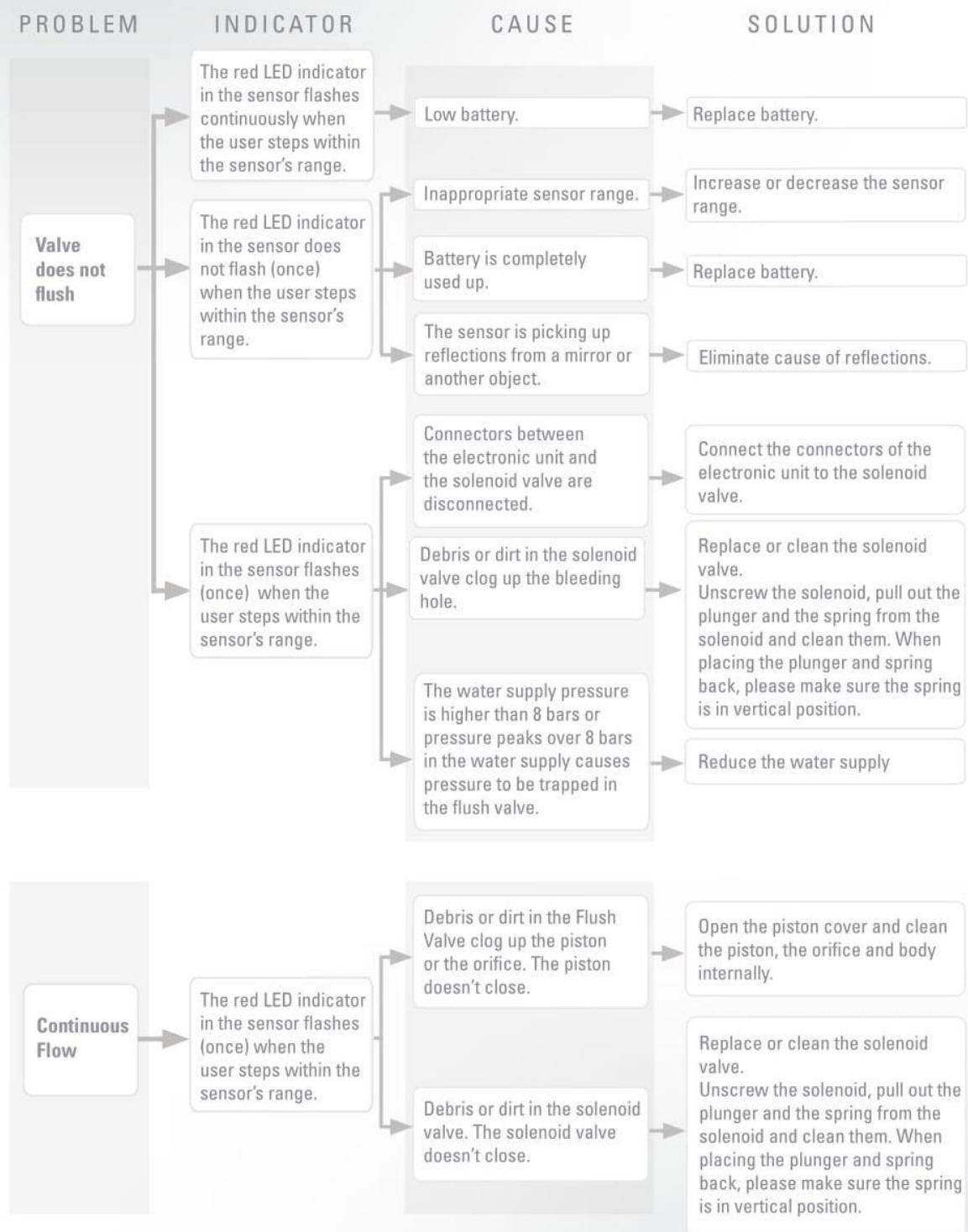
11) If the range is unsatisfactory, refer to the section entitled "Settings Adjustment".

12) Tighten the panel to the cover seat with the bottom screw.





TROUBLE – SHOOTING





TROUBLE – SHOOTING

PROBLEM

CAUSE

SOLUTION

Low Discharge

The self cleaning needle came out of the piston orifice or is displaced. The orifice delivers more water than usual pushing down the piston, causing the piston to close faster than normal.

Replace the piston.

The U-seal is torn or damaged

Replace the U-seal.

Flow time setting is too short.

Increase the flow time.

High Discharge

Debris or dirt in the Flush Valve clog up the piston. Friction in the piston movement causes the piston to close slower than normal.

Open the piston cover and clean the piston and body internally.

Dirt in the piston orifice prevents enough water from going through the orifice. The reduced flow causes the piston to close slower than normal.

Open the piston cover and clean the piston and the orifice.

Flow time setting is too long.

Reduce the flow time setting.

Dripping

Debris or dirt in the piston seat.

Clean the piston seat.

Piston seal is torn or damaged.

Replace piston seal.

Debris or dirt in the solenoid valve orifice. The solenoid valve doesn't close properly.

Replace or clean the solenoid valve.
Unscrew the solenoid, pull out the plunger and the spring from the solenoid and clean them. When placing the plunger and spring back, please make sure the spring is in vertical position.

The plunger seal is torn or damaged.